

## Lee Jeonglok | Nabi

28 July – 21 August 2016

Opening reception 27 July | 6–8 pm

**Lee Jeonglok is a Korean artist who uses photography to create and record his world.**

**He makes mysterious and evocative images of strange and magical events. These happen in carefully chosen, personally significant landscapes, realised by a thorough mastery of photographic technique.**

The production of these pieces is a complex and painstaking process. These images are not made digitally, but by an 'in camera' technique. This means using long and multiple exposures, manipulating artificial light and deploying various props on site and in real time. The physicality and engagement of this process is important to the artist. He states that this effort allows him to reveal another, parallel world.

'Nabi', the butterfly, is a valued image and symbol. It is an interlocutor to the spiritual world, somewhere that is significant for this artist to locate and reveal in his work. This image, created out of light, multiplies into clusters and bunches, forming clouds that glow and sparkle in the landscape. Existing only for an instant, the length of a photoflash, these 'Nabi' express something other, a world conjured out of the artist's perception and now revealed to us.

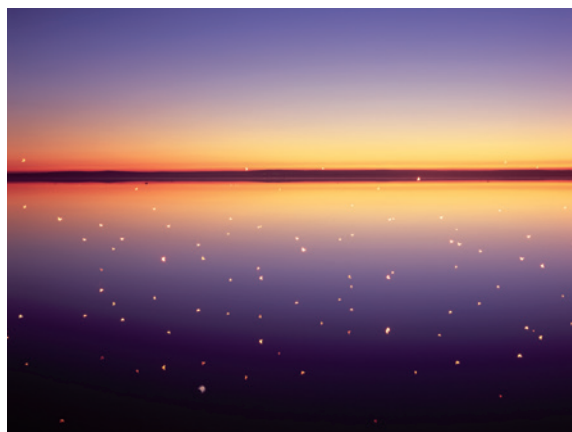
Lee Jeonglok references the following text as describing the essential sense of these haunting photographic pieces.

'There is a hidden world  
Where souls live.  
When fog of death falls,  
The journey is charted.  
On the timeless journey  
A guiding light dances.  
A light that has disappeared from conscious memory  
But is seen in the selfless state.'

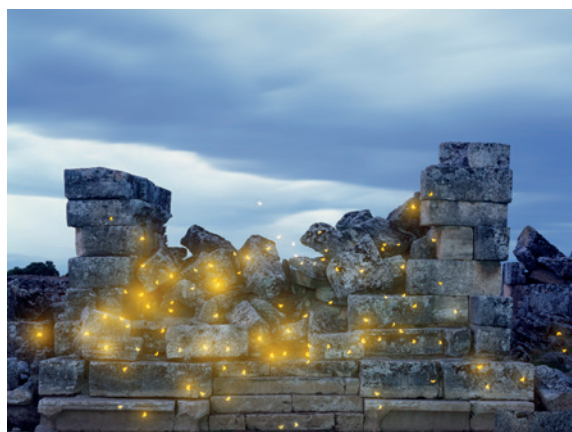
'Journey of Souls'  
Michael Newton



**Nabi 122** | 2016  
C-Type Print | Edition of 7 + AP 2: 120 x 160cm (47 x 63in)  
Edition of 10 + AP 2: 90 x 120cm (35.5 x 47in)



**Nabi 133** | 2016  
C-Type Print | Edition of 7 + AP 2: 120 x 160cm (47 x 63in)  
Edition of 10 + AP 2: 90 x 120cm (35.5 x 47in)



**Nabi 130** | 2016  
C-Type Print | Edition of 7 + AP 2: 120 x 160cm (47 x 63in)  
Edition of 10 + AP 2: 90 x 120cm (35.5 x 47in)

# Pontone

GALLERY



**Nabi 127** | 2016  
C-Type Print | Edition of 7 + AP 2: 160 x 120cm (63 x 47in)  
Edition of 10 + AP 2: 120 x 90cm (47 x 35.5in)



**Nabi 128** | 2016  
C-Type Print | Edition of 7 + AP 2: 120 x 160cm (47 x 63in)  
Edition of 10 + AP 2: 90 x 120cm (35.5 x 47in)



**Nabi 124** | 2016  
C-Type Print | Edition of 7 + AP 2: 120 x 160cm (47 x 63in)  
Edition of 10 + AP 2: 90 x 120cm (35.5 x 47in)