

LEE JEONGLOK

Born in Gwangju, South Korea, 1971

Education

1996 B.F.A in Design, Gwangju University, Gwangju
1998 M.F.A in Photo Design, Graduate School of Hongik
University, Seoul

2002 M.F.A in Fine Art Photography, Rochester Institute of
Technology, Rochester, New York

Solo Exhibitions

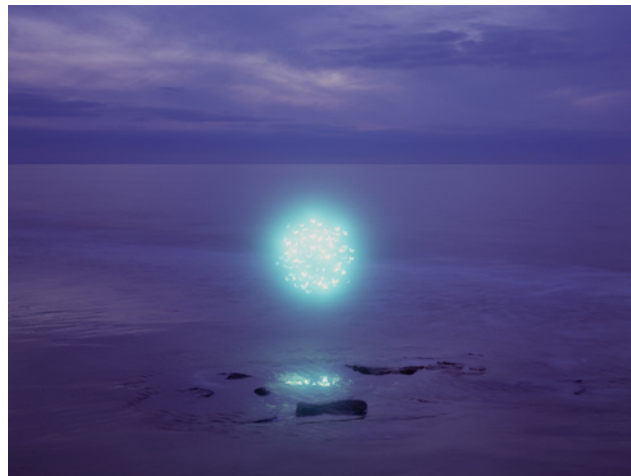
- 2017 Nabi, BK Gallery, Seoul
Nabi & Tree of Life, Lucida Gallery, Jinju
- 2016 Nabi, Pontone Gallery, London
Nabi, Soul Art Space, Busan
- 2015 Nabi, Soul Art Space, Busan
See the Unseen, BMW Photo Space, Busan
- 2014 Journey of Light, Shinsegae Gallery, Busan
Let There Be Light, Zendai Contemporary Art Space,
Shanghai
Palette of Light, Kwansoon Gallery, Seoul
Tree of Life in Island, Shinsegae Gallery, Seoul
Tree of Life in Island, Shinsegae Gallery, Gwangju
- 2013 Tree of Life in Island, Soul Art Space, Busan
Light & Revelation, Vit Gallery, Seoul

Selected Group Exhibitions

- 2018 Art Miami 2018, Soul Art Space, Florida
KIAF 2018, Soul Art Space, Seoul
Art Busan 2018, Soul Art Space, Busan
- 2017 Market Art Budapest, Opiniom Gallery, Budapest
Lee Joenglok | Parallel Worlds: Tree of Life & Nabi,
Pontone Gallery, London
- 2016 Figurative, Pontone Gallery Taiwan, Taichung
- 2015 Masters of Light, Shine Artists & Albemarle Gallery,
London
- 2014 Nature, in Process, Space Cottonseed, Singapore
Ha Jung-woong Young Artists "Light-2014", Kwangju
Museum of Art, Gwangju
FULL MOON: A Story of Sky and Earth, Daegu Photo
Biennale, Daegu
Journal of the Plague Year, Arko Art Centre, Seoul
Festival of Photography in Museum-History, Kwangju
Museum of Art, Gwangju

Public Collections

- Art Bank, National Museum of Contemporary Art, Gwacheon
Gwangju Museum of Art, Gwangju
Daelim Museum of Art, Seoul
Art Sonje Museum, Gyeongju
Westin Chosun Hotel, Busan
Ilmin Museum of Art, Seoul



Nabi 12 | C-type print | 120 x 160 cm (47 x 63 in) | 2015



Nabi 07 | C-type print | 120 x 160 cm (47 x 63 in) | 2015



Tree of Life in Island 5-1-4 | C-type print | 120 x 160 cm (47 x 63 in) | 2013